

## Republic Services' Western Region Landfills

### Western United States

#### Client

Republic Services, Inc.

#### Timeframe

2006 - Present

#### Contract Amount

\$1,000,000+

#### Personnel

Gary Lass

John Hower

Jake Russell

Sarah Battelle

Kyle Welchans

Bryan Fritzler

Doug Junk

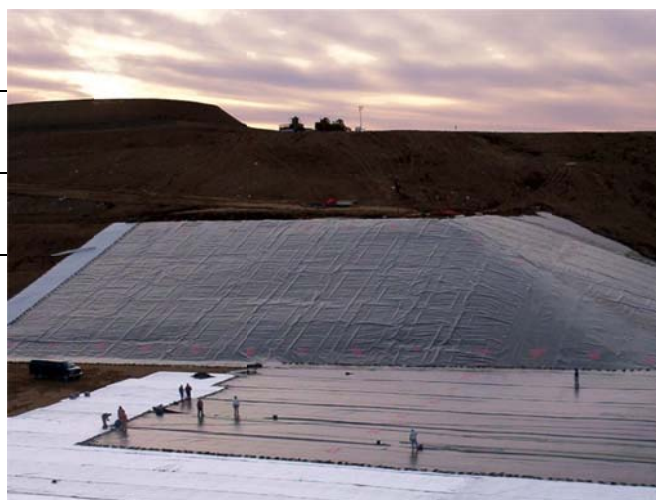
Caleb Miller

Monte Christie

Robbie Warner

Noah Campbell

Courtney Barrett



The GLA project team has been providing solid waste services to Republic Services since 2006 and is currently or has provided services to 44 landfills in the Western Regional.

GLA prepares the annual aerial budget models for nearly all active landfill sites in Republic's west region, including all sites in California, Oregon, Washington, Arizona, Nevada, Colorado, and Utah. The aerial budget models are one portion of a larger model that Republic uses for their annual budgeting determinations. For the aerial budget models, GLA prepares a series of drawings utilizing current and past topography, constructed and overall waste fill surfaces, and interim and overall excavation surfaces. Based on these drawings GLA performs quantity calculations such as constructed remaining airspace, year over year consumed airspace, overall remaining excavation and airspace, stockpile volumes, and constructed and overall site life. These quantity calculations aid Republic in monitoring year over year operations performance and budgeting for landfill cell development and other landfill infrastructure improvements.

Permitting assistance, master planning, stormwater engineering, stormwater compliance, expansion and closure design, geotechnical engineering, operations support, , and construction quality assurance have been provided for a large portion of Republic's 44 Western Region Landfills. The GLA project team have provided over 1,000 projects of varying complexity to Republic over their relationship.

#### Project Highlights

- Aerial Budget Models
- General - On-call services
- Permitting including JTD preparation
- Master Planning, expansion design and CQA
- Closure design and CQA
- Geological and geotechnical engineering including slope stability and liquefaction studies
- Hydrogeological and environmental monitoring including groundwater and landfill gas monitoring
- Stormwater and stormwater master planning
- Stormwater compliance
- Transfer station engineering